

AKOCONTROL

The most suitable and flexible range of temperature and humidity control



AKOCONTROL Darwin

Data table of controllers for Refrigeration market

	Relays outputs				Outputs				Options				Format						
	Compressors ress. (indic.)	Defrost	Fans ress. (indic.)	Light/Aux./Alarm	Control temperature	End defrost temperature	Environment temperature	Digital input 1	Digital input 2	Power Supply	Buzzer	Real time clock	Integrated communications	Cut panel	Standard panel	Big display	Large panel	DIN	Wall-mounting
Thermometers																			
AKO-D14012	-	-	-	-	-	-	NTC/PTC	-	-	12/24V	-	-	-	-	•	-	-	-	-
AKO-D14023	-	-	-	-	-	-	NTC/PTC	-	-	230V	-	-	-	-	•	-	-	-	-
AKO-D14023-C	-	-	-	-	-	-	NTC/PTC	-	-	90-240V	-	-	•	-	•	-	-	-	-
AKO-13012	-	-	-	-	-	-	NTC	-	-	12V	-	-	-	•	-	-	-	-	-
AKO-13023	-	-	-	-	-	-	NTC	-	-	230V	-	-	-	•	-	-	-	-	-
AKO-D14602	-	-	-	-	-	-	NTC/PTC	-	-	230V	-	-	-	-	-	-	-	-	•
AKO-14605	-	-	-	-	-	-	NTC	-	-	230V	-	-	-	-	-	-	-	-	•
1 relay controllers																			
AKO-D14112	12A(9)	-	-	-	NTC/PTC	NTC/PTC*	-	•	•*	12/24V	-	-	-	-	•	-	-	-	-
AKO-D14123	12A(9)	-	-	-	NTC/PTC	-	-	-	-	230V	-	-	-	-	•	-	-	-	-
AKO-D14123-2	16A(10)	-	-	-	NTC/PTC	NTC/PTC*	-	•	•*	230V	-	-	-	-	•	-	-	-	-
AKO-D14123-2-RC	16A(10)	-	-	-	NTC/PTC	NTC/PTC*	-	•	•*	90-240V	-	•	•	-	•	-	-	-	-
AKO-13112	12A(9)	-	-	-	NTC	-	-	-	-	12V	-	-	-	•	-	-	-	-	-
AKO-13123	12A(9)	-	-	-	NTC	-	-	-	-	230V	-	-	-	•	-	-	-	-	-
AKO-10123	12A(9)	-	-	8A (4)	NTC	-	-	-	-	230V	-	-	-	-	-	-	•	-	-
AKO-D10123	12A(9)	-	-	-	NTC/PTC	-	-	-	-	230V	-	-	-	-	-	-	•	-	-
AKO-D14611	12A(9)	-	-	-	NTC/PTC	-	-	-	-	230V	-	-	-	-	-	-	-	-	•
AKO-D14615	12A(9)	-	-	-	NTC/PTC	-	-	-	-	230V	-	-	-	-	-	-	-	-	•
AKO-D14622	12A(9)	-	-	5A (4)	NTC/PTC	-	-	•	•	230V	-	-	-	-	-	-	-	-	•
AKO-D14622-C	12A(9)	-	-	5A (4)	NTC/PTC	-	-	•	•	90-240V	-	-	•	-	-	-	-	-	•
AKOTIM-21TE	12A(9)	-	-	-	NTC	-	NTC	•	-	230V	-	-	-	-	-	-	-	-	•
AKOTIM-21ATE	12A(9)	-	-	5A (4)	NTC	-	NTC	•	-	230V	-	-	-	-	-	-	-	-	•
AKOTIM-21ARTE	12A(9)	-	-	5A (4)	NTC	-	NTC	•	-	230V	-	•	-	-	-	-	-	-	•
AKOTIM-21ARTEB	12A(9)	-	-	5A (4)	NTC	-	NTC	•	-	230V	•	•	-	-	-	-	-	-	•
2 relays controllers																			
AKO-D14212	12A(9)	-	-	8A (4)	NTC	NTC*	-	•	•*	12V	-	-	-	-	•	-	-	-	-
AKO-D14223	12A(9)	-	-	8A (4)	NTC	NTC*	-	•	•*	230V	-	-	-	-	•	-	-	-	-
AKO-10223	12A(9)	8A (4)	-	8A (4)	NTC	NTC*	-	•	•	230V	-	-	-	-	-	-	•	-	-
AKO-D10223	12A(9)	-	-	8A (4)	NTC	NTC*	-	•	•*	230V	-	-	-	-	-	-	•	-	-
AKOTIM-22TE	12A(9)	8A (4)	-	-	NTC	NTC	NTC	•	-	230V	-	-	-	-	-	-	-	-	•
AKOTIM-22ATE	12A(9)	8A (4)	-	5A (4)	NTC	NTC	NTC	•	-	230V	-	-	-	-	-	-	-	-	•
AKOTIM-22ARTE	12A(9)	8A (4)	-	5A (4)	NTC	NTC	NTC	•	-	230V	-	•	-	-	-	-	-	-	•
AKOTIM-22ARTEB	12A(9)	8A (4)	-	5A (4)	NTC	NTC	NTC	•	-	230V	•	•	-	-	-	-	-	-	•
3 relays controllers																			
AKO-D14312	12A(9)	-	5A(4)	8A(4)	NTC	NTC*	-	•	•*	12V	-	-	-	-	•	-	-	-	-
AKO-D14323	12A(9)	-	5A(4)	8A(4)	NTC	NTC*	-	•	•*	230V	-	-	-	-	•	-	-	-	-
AKO-D14323-C	12A(9)	-	5A(4)	8A(4)	NTC	NTC*	-	•	•*	90-240V	-	-	•	-	•	-	-	-	-
AKO-D16323	12A(9)	12A (9)	5A(4)	-	NTC	NTC	-	•	-	230V	-	-	-	-	-	•	-	-	-
AKO-10323	12A(9)	8A (4)	8A(4)	8A(4)	NTC	NTC	-	•	•	230V	-	-	-	-	-	-	•	-	-
AKO-D10323	12A(9)	-	5A(4)	8A(4)	NTC	NTC	-	•	•	230V	-	-	-	-	-	-	•	-	-
AKO-D14632	12A(9)	8A (4)	12A(9)	-	NTC	NTC	NTC*	•	•*	230V	-	-	-	-	-	-	-	-	•
AKO-D14632-C	12A(9)	8A (4)	12A(9)	-	NTC	NTC	NTC*	•	•*	90-240V	-	-	•	-	-	-	-	-	•
AKOTIM-23TE	12A(9)	8A (4)	5A(4)	-	NTC	NTC	NTC	•	-	230V	-	-	-	-	-	-	-	-	•
4 relays controllers																			
AKO-D14412	5A(4)	5A (4)	5A(4)	5A (4)	NTC	NTC*	NTC*	•*	•*	12V	-	-	-	-	•	-	-	-	-
AKO-D14412-RC	5A(4)	5A (4)	5A(4)	5A (4)	NTC	NTC*	NTC*	•*	•*	12V	-	•	•	-	•	-	-	-	-
AKO-D14423	5A(4)	5A(4)	5A(4)	5A(4)	NTC	NTC*	NTC*	•*	•*	230V	-	-	-	-	•	-	-	-	-
AKO-D14423-RC	5A(4)	5A (4)	5A(4)	5A (4)	NTC	NTC*	NTC*	•*	•*	90-240V	-	•	•	-	•	-	-	-	-
AKO-D14642	12A(9)	8A (4)	12A(9)	5A (4)	NTC	NTC	NTC*	•	•*	230V	-	-	-	-	-	-	-	-	•
AKO-D14642-C	12A(9)	8A (4)	12A(9)	5A (4)	NTC	NTC	NTC*	•	•*	90-240V	-	-	•	-	-	-	-	-	•
AKOTIM-23ATE	12A(9)	8A (4)	5A(4)	5A (4)	NTC	NTC	NTC	•	-	230V	-	-	-	-	-	-	-	-	•
AKOTIM-23ARTE	12A(9)	8A (4)	5A(4)	5A (4)	NTC	NTC	NTC	•	-	230V	-	•	-	-	-	-	-	-	•
AKOTIM-23ARTEB	12A(9)	8A (4)	5A(4)	5A (4)	NTC	NTC	NTC	•	-	230V	•	•	-	-	-	-	-	-	•

Application scope

Thermometers

- Ideal for temperature indication.
- A single button for adjusting parameters.
- NTC/PTC probe selectable by program. Allow probe calibration.
- Temperature display in °C or °F with decimal point.



+ Services



- Services



Single button



Communic.



1 & 2 relays Controllers

- Ideal for positive service (temperatures above 3 °C) and static refrigerated units with positive temperature.
- HOT/COLD operation selectable by program.
- Defrost by compressor shutdown, air, resistance, and cycle reversal.
- Wizard to simplify startup with the 8 most common applications (soft drinks, fruit and vegetables, frozen, etc.)
- Auxiliary relay configurable for fans, defrost, alarm or light.



+ Services



Fans



Defrost



Resistance



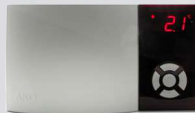
Aux input



Communic.



Compressor



3 relays Controllers

- Ideal for negative or positive service, ventilated refrigerated units with positive or negative temperature.
- Auxiliary relay configurable for fans, defrost, alarm or light.
- Wizard to simplify startup with the 8 most common applications (soft drinks, fruit and vegetables, frozen, etc.)
- Defrost by compressor shutdown, air, resistance, and cycle reversal.



+ Services



- Services



Fans



Defrost



Communic.



Aux input



Compressor



4 relays Controllers

- Ideal for positive or negative service, ventilated refrigerated units with positive or negative temperature.
- Auxiliary relay configurable for fans, defrost, alarm or light.
- Defrost by compressor shutdown, air, resistance, and cycle reversal.
- Wizard to simplify startup with the 8 most common applications (soft drinks, fruit and vegetables, frozen, etc.)
- Temperature display in °C or °F with decimal point.
- Configurable digital inputs (door, external alarm, severe external alarm, remote defrost mode, ECO or rapid cooling).



+ Services



- Services



Fans



Defrost



Communic.



Aux input



Compressor



Comunic.



Start-up wizard



ECO mode

