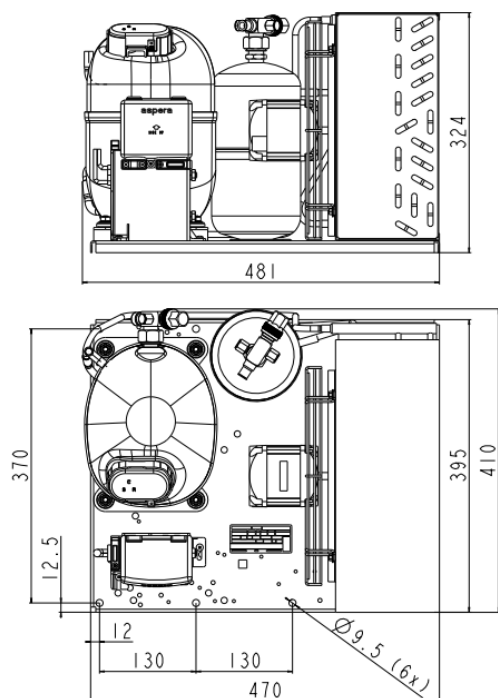
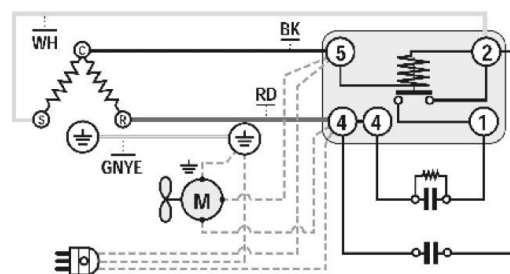
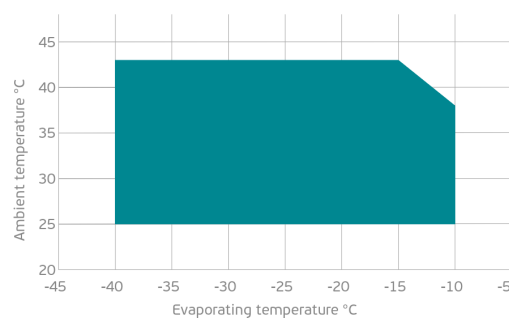
**GENERAL DATA**

| | |
|----------------------|-------------------------|
| Application: | LBP |
| Refrigerant: | R404A |
| Expansion Device: | C-V |
| Weight: | 38.7 kg |
| Receiver: | 2.3 liter |
| Voltage/Frequency: | 220 - 240 V 50 ~ |
| Height: | 38.7 mm |
| Length: | 481 mm |
| Width: | 410 mm |
| Institute Approvals: | CE |

EXTERNAL DIMENSIONS**WIRING DIAGRAM****OPERATING ENVELOPE****COMPONENTS (SPARE PARTS)**

| | | |
|-------------|----------------|-------------|
| condenser: | 3R12T | 2451140 |
| fankit: | 34W 275/31°/5B | 1996583 |
| compressor: | NJ2212GK | 943DA19..AC |

For additional accessories please contact our technical support

| | | |
|--------------|----------------|------------|
| valve_disch: | SOLDER 3/8" | 2110049 |
| valve_suca: | SOLDER 5/8" | 2110054 |
| elkit: | ELKOM NJ2212GK | 943DA1904A |

ELECTRICAL DATA

| | |
|------------------------------|-------|
| Motor Type: | CSR - |
| Locked Rotor Amperage (RLA): | 36 A |
| Max.Current: | 6.5 A |

At maximum evaporating temperature and maximum ambient temperature.

FAN MOTOR

| | |
|-----------------|-------------------------|
| Number: | 1 - |
| Shaft Power: | 34 W |
| Air Flow: | 800 m ³ /hod |
| Blade Diameter: | 275 mm |

PERFORMANCE CURVE DATA

Standard: EN13215-RG20 / return gas 20°C, subcooling 3K

50 Hz

| | Evaporating Temperature (°C) | Cooling Capacity (W) | Power Consumption (W) | Current Consumption (A) | Efficiency (W/W) |
|--------------------------------|------------------------------------|----------------------------|-----------------------------|-------------------------------|---------------------|
| 25°C Ambient Temperature | -10°C | 2 621 | 1 752 | 8.64 | 1.50 |
| | -15°C | 2 260 | 1 532 | 7.64 | 1.48 |
| | -20°C | 1 926 | 1 335 | 6.75 | 1.44 |
| | -25°C | 1 617 | 1 161 | 5.98 | 1.39 |
| | -30°C | 1 329 | 1 010 | 5.33 | 1.32 |
| | Rated point -35°C | 1 061 | 883 | 4.80 | 1.20 |
| | -40°C | 808 | 777 | 4.39 | 1.04 |
| 32°C Ambient Temperature | -10°C | 2 475 | 1 791 | 8.80 | 1.38 |
| | -15°C | 2 104 | 1 562 | 7.76 | 1.35 |
| | -20°C | 1 762 | 1 355 | 6.84 | 1.30 |
| | -25°C | 1 446 | 1 171 | 6.03 | 1.24 |
| | -30°C | 1 154 | 1 008 | 5.34 | 1.14 |
| | Rated point -35°C | 883 | 867 | 4.77 | 1.02 |
| | -40°C | 629 | 748 | 4.33 | 0.84 |
| 43°C Ambient Temperature | -15°C | 1 721 | 1 644 | 8.15 | 1.05 |
| | -20°C | 1 426 | 1 423 | 7.14 | 1.00 |
| | -25°C | 1 159 | 1 222 | 6.24 | 0.95 |
| | -30°C | 920 | 1 041 | 5.46 | 0.88 |
| | Rated point -35°C | 704 | 880 | 4.79 | 0.80 |
| | -40°C | 509 | 737 | 4.23 | 0.69 |

