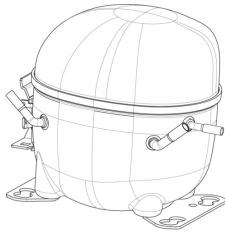


220-240V 50Hz 1~**GENERAL DATA****Application:** HBP**Refrigerant:** R134a**Evaporating Temperature Range:** -15°C to 10°C**Compressor Cooling:** Fan**Fan air flow:** 520 m³/h**Maximum Condensing Pressure - Operating:** 13.92 kgf/cm² (psig)**Maximum Condensing Pressure - Peak:** 15.62 kgf/cm² (psig)**Type:** Hermetic reciprocating**Technology Type:** On-Off**Expansion Device:** Capillary Tube or Expansion Valve**Packing Quantity:** Single - 1 pcApprovals:   **MECHANICAL DATA****Bore:** 30.16 mm**Stroke:** 20 mm**Free Internal Volume:** 2.1 l**Maximum Recommended Refrigerant Charge:** 350 ml**Weight:** 11.3 kg**ELECTRICAL DATA****Motor Type:** CSIR -**Starting Torque:** HST -**Maximum Motor Temperature:** 130 °C**Start Winding Resistance:** 27.95 Ω (± 10%) at 25°C**Run Winding Resistance:** 5.11 Ω (± 10%) at 25°C**Locked Rotor Amperage (RLA):** - A**MOUNTING ACCESSORIES**

	Description	Code
Cover:	yes	2075282
Grommets:	-	2221011
Sleeves:	-	2222018
Terminal:	yes	1027060
Overload Protector Bracket:	yes	2075299
Capacitor Bracket:	yes	2256008

ELECTRICAL COMPONENTS

	Component type	Description	Code
Start Capacitor:	-	72-88 MFD 330V	2252345
Starting Device:	Current relay	MTRP-0012-65	2334112
Motor Protection:	External 3/4"	T0741/G6	2319079

EXTERNAL CHARACTERISTICS**Base Plate:** European**Tray Holder:** No**Height:** 206

	Internal Diameter (mm)	Material	Shape
Suction Connector	8.1	Copper	Slanted 42°
Discharge Connector	6.1	Copper	Straight
Process Connector	6.1	Copper	Slanted 42°



RATED POINT DATA**220-240V 50Hz**

Cooling Capacity (w)	Power Consumption (W)	Current Consumption (A)	Gas Flow Rate	Efficiency (w/W)
	±5%	±5%	±5%	±7%
1 323	624	3.76	29.28	2.12

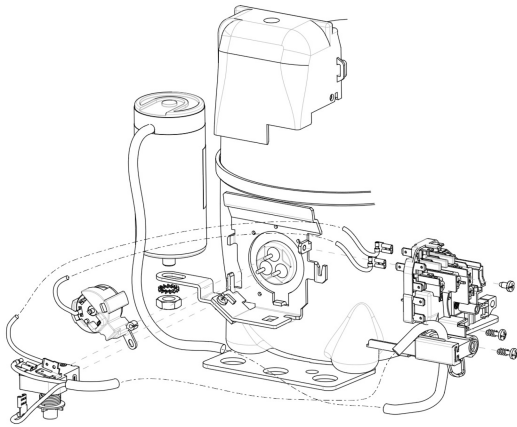
PERFORMANCE CURVE DATA**220-240V 50Hz**

Condensing Temperature (°C)	Evaporating Temperature (°C)	Cooling Capacity (w)	Power Consumption (W)	Current Consumption (A)	Gas Flow Rate	Efficiency (w/W)
		±5%	±5%	±5%	±5%	±7%
35°C	10	1 843	549	3.51	34.81	3.36
	5	1 527	499	3.32	28.66	3.06
	0	1 249	455	3.18	23.32	2.75
	-5	1 011	415	3.05	18.79	2.44
	-10	812	380	2.95	15.03	2.13
	-15	651	351	2.87	12.02	1.86

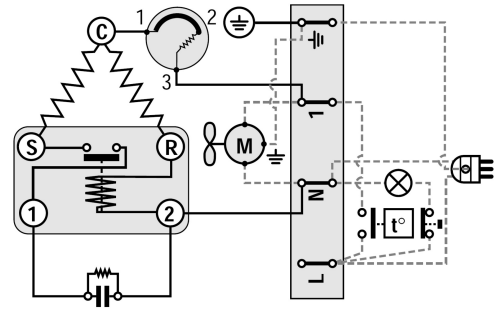
Condensing Temperature (°C)	Evaporating Temperature (°C)	Cooling Capacity (w)	Power Consumption (W)	Current Consumption (A)	Gas Flow Rate	Efficiency (w/W)
		±5%	±5%	±5%	±5%	±7%
45°C	10	1 648	600	3.69	33.71	2.75
	5	1 366	548	3.49	27.74	2.49
	0	1 119	500	3.31	22.58	2.24
	-5	906	455	3.16	18.19	1.99
	-10	727	413	3.02	14.55	1.76
	-15	583	374	2.90	11.63	1.56

Condensing Temperature (°C)	Evaporating Temperature (°C)	Cooling Capacity (w)	Power Consumption (W)	Current Consumption (A)	Gas Flow Rate	Efficiency (w/W)
		±5%	±5%	±5%	±5%	±7%
55°C	10	1 459	660	3.91	32.60	2.21
	5	1 205	602	3.68	26.73	2.00
	0	982	546	3.47	21.63	1.80
	-5	788	491	3.28	17.28	1.61
	-10	626	438	3.10	13.65	1.43

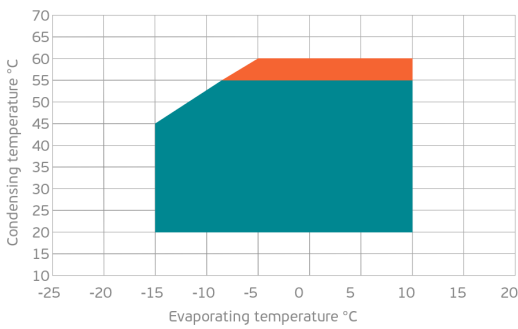
ASSEMBLY INSTRUCTION



WIRING DIAGRAM

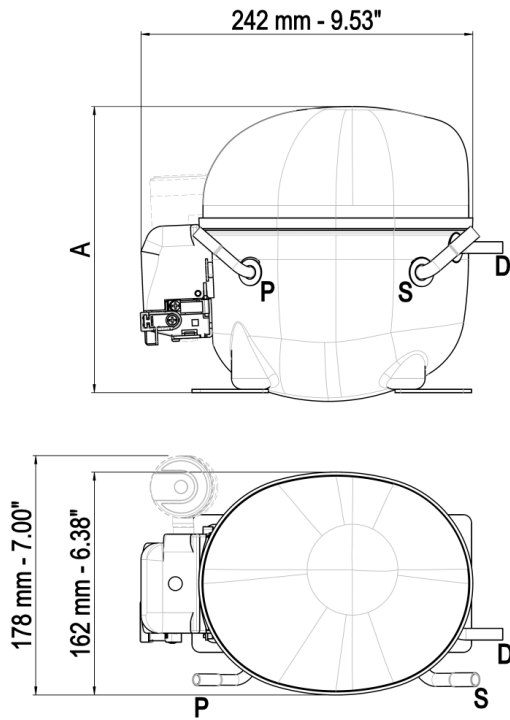


OPERATING ENVELOPE



- Operating Condition
- Transient Condition
- Superheating

NOTE: usage of compressors outside of intended working range cannot make use of the warranty, or should be consulted with Technical support.



DWG02	∅ mm	∅ in	material
S - Suction	6.10 - 6.20	0.24	Cu
P - Process	6.10 - 6.20	0.24	Cu
S - Discharge	4.86 - 5.02	3/16	Cu

DWG03	∅ mm	∅ in	material
S - Suction	8.10 - 8.20	0.32	Cu
P - Process	6.10 - 6.20	0.24	Cu
S - Discharge	6.10 - 6.20	0.24	Cu

