

220-240V 50 1~



GENERAL DATA

Application: LBP
Refrigerant: R600a
Evaporating Temperature Range: -35°C to -10°C
Compressor Cooling: Static
Type: Hermetic reciprocating
Technology Type: On-Off
Expansion Device: Capillary Tube
Packing Quantity: Multi - 88 pcs
Displacement: 7.23 cm³
Horse power: 1.8 hp

Approvals:   

MECHANICAL DATA

Bore: 24 mm
Stroke: 16 mm
Oil Charge: 150ml +/-15ml
Free Internal Volume: 1.5 cm³
Maximum Recommended Refrigerant Charge: 150 g
Oil Type Configuration: Alkylbenzene
Oil Type Viscosity: ISO5
Compressor pressurization: Light vacuum
Weight: 7.9 kg

ELECTRICAL DATA

Motor Type: RSCR
Starting Torque: LST
Voltage working range at 50 Hz: 198-254 V
Maximum Motor Temperature: 130 °C
Start Winding Resistance: 18.8 Ω (± 10%) at 25°C
Run Winding Resistance: 41 Ω (± 10%) at 25°C

MOUNTING ACCESSORIES

	Description	Code
Terminal Board:	no	-
Overload Protector Bracket:	no	-
Washer:	no	-
Pin:	no	-
Clip:	no	-
Rotolock valve:	no	-
Cover:	yes	2075282
Anchorage:	yes	1027058
Grommets:	yes	2221011
Sleeves:	yes	2222018
Capacitor Bracket:	yes	2256008

ELECTRICAL COMPONENTS

	Component type	Description	Code
Run Capacitor:		4 MFD	2253110 2253326
Run Capacitor:		3 MFD	2253108
Motor Protection:	External	4TM189KFBYY-73 DRB196K61A5	2312011 13634179

EXTERNAL CHARACTERISTICS

Base Plate: European
Tray Holder: No
Height: 171 mm

	Internal Diameter (mm)	Material	Shape
Suction Connector	6.1	Copper	Slanted 42°
Discharge Connector	5.1	Copper	Straight
Process Connector	5.92	Copper	Slanted 43°

RATED POINT DATA

Cooling Capacity (W)	Power Consumption (W)	Current Consumption (A)	Gas Flow Rate (kg/h)	Efficiency (W/W)
±5%	±5%	±5%	±5%	±7%
119	65	0.30	1.27	1.82

Test condition: ASHRAE, Static, Return Gas 32.2°C, Evaporating: -23.3°C, Condensing: 54°C, Ambient: 32.2°C, Liquid: 32.2°C

PERFORMANCE CURVE DATA

220V 50Hz

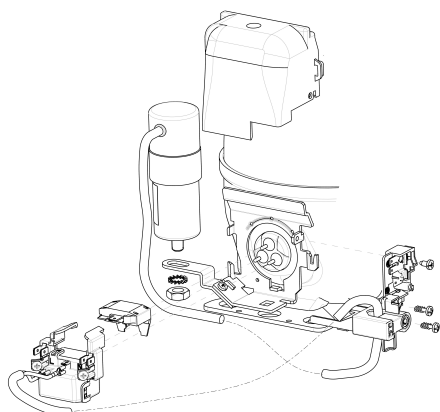
Condensing Temperature (°C)	Evaporating Temperature (°C)	Cooling Capacity (W)	Power Consumption (W)	Current Consumption (A)	Gas Flow Rate (kg/h)	Efficiency (W/W)
		±5%	±5%	±5%	±5%	±7%
35°C	-10	260	81	0.39	2.80	3.22
	-15	209	73	0.35	2.24	2.87
	-20	165	65	0.31	1.76	2.54
	-25	127	57	0.27	1.36	2.21
	-30	96	51	0.23	1.02	1.89
	-35	71	45	0.20	0.76	1.59

Condensing Temperature (°C)	Evaporating Temperature (°C)	Cooling Capacity (W)	Power Consumption (W)	Current Consumption (A)	Gas Flow Rate (kg/h)	Efficiency (W/W)
		±5%	±5%	±5%	±5%	±7%
45°C	-10	248	89	0.42	2.67	2.78
	-15	198	79	0.37	2.12	2.51
	-20	154	69	0.32	1.65	2.24
	-25	118	60	0.28	1.26	1.98
	-30	88	51	0.24	0.94	1.72
	-35	65	43	0.21	0.69	1.49

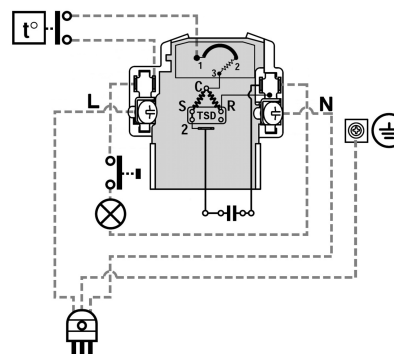
Condensing Temperature (°C)	Evaporating Temperature (°C)	Cooling Capacity (W)	Power Consumption (W)	Current Consumption (A)	Gas Flow Rate (kg/h)	Efficiency (W/W)
		±5%	±5%	±5%	±5%	±7%
55°C	-10	233	97	0.44	2.51	2.40
	-15	184	85	0.39	1.97	2.16
	-20	142	73	0.34	1.52	1.94
	-25	107	62	0.29	1.14	1.71
	-30	78	52	0.25	0.84	1.50
	-35	57	43	0.21	0.61	1.32

Test condition: ASHRAE, Static, Return Gas 32.2°C, Ambient: 32.2°C, Liquid: 32.2°C

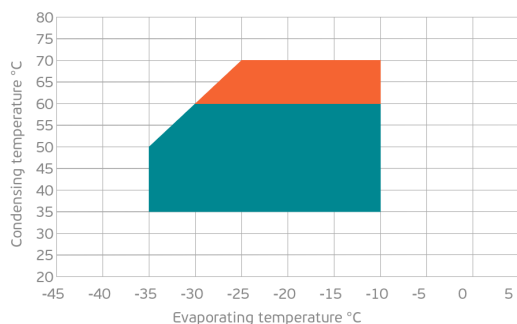
ASSEMBLY INSTRUCTION



WIRING DIAGRAM



OPERATING ENVELOPE



- Operating Condition
- Transient Condition
- Superheating

NOTE: usage of compressors outside of intended working range cannot make use of the warranty, or should be consulted with Technical support.