

# TL2.5F

## Standard Compressor

### R134a

### 220-240V 50Hz

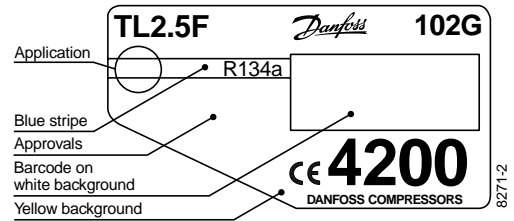
Data Sheet (Replaces CD.42.S3.02)

#### General

Compressor	<b>TL2.5F</b>
Code number (small baseplate)	102G4200
Code number (large baseplate)	102G4201

#### Application

Application		MBP
Evaporating temperature range	°C	-25 to 0
Voltage range	V/Hz	198 - 254 /50
Motor type		RSIR
Max. ambient temperature	°C	38
Comp. cooling at ambient temp.	32°C	S
	38°C	S



- S = Static cooling normally sufficient
- O = Oil cooling
- F<sub>1</sub> = Fan cooling 1.5 m/s  
(compressor compartment temperature equal to ambient temperature)
- F<sub>2</sub> = Fan cooling 3.0 m/s necessary

#### Design

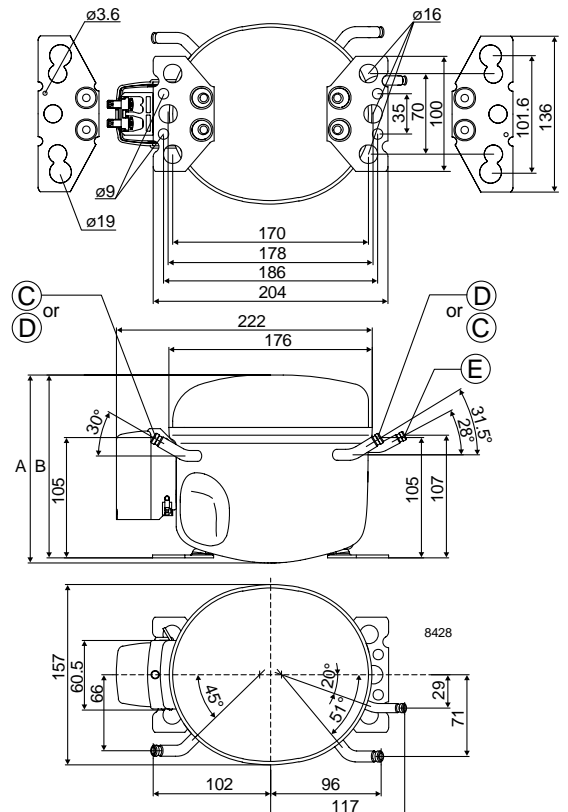
Displacement	cm <sup>3</sup>	2.61
Oil quantity	cm <sup>3</sup>	180
Maximum refrigerant charge	g	400
Free gas vol. in compressor	cm <sup>3</sup>	1600
Weight without electrical equipment	kg	6.7

#### Motor

Motor size	watt	60
LRA (rated after 4 sec. UL984) LST	A	2.3
Cut-in current LST	A	7.0
Resistance, main and start winding (25°C)	Ω	40.0/15.0
Approvals		EN 60335-2-34 with Annex AA, CCIB

#### Dimensions

		102G4200	102G4201
Height	mm	A	163
		B	159
Suction connector	location/I.D. mm	C 6.2 ±0.09	6.5 ±0.09
Process connector	location/I.D. mm	D 6.2 ±0.09	6.5 ±0.09
Discharge connector	location/I.D. mm	E 5.0+0.12/+0.20	5.0+0.12/+0.20
Compressors on a pallet	pcs.	125	



### Capacity (EN 12900/CECOMAF)

watt

Comp. °C	-25	-23.3	-20	-15	-10	-5	0
TL2.5F	32	37	47	65	86	110	137

### Capacity (ASHRAE)

watt

Comp. °C	-25	-23.3	-20	-15	-10	-5	0
TL2.5F	39	45	58	80	106	136	169

### Power consumption

watt

Comp. °C	-25	-23.3	-20	-15	-10	-5	0
TL2.5F	54	57	63	71	80	89	98

### Current consumption

A

Comp. °C	-25	-23.3	-20	-15	-10	-5	0
TL2.5F	0.44	0.45	0.46	0.49	0.52	0.55	0.58

### COP (EN 12900/CECOMAF)

W/W

Comp. °C	-25	-23.3	-20	-15	-10	-5	0
TL2.5F	0.59	0.64	0.75	0.91	1.07	1.24	1.40

### COP (ASHRAE)

W/W

Comp. °C	-25	-23.3	-20	-15	-10	-5	0
TL2.5F	0.73	0.79	0.92	1.12	1.33	1.53	1.73

Test conditions

Condensing temperature

Ambient and suction gas temp.

Liquid temperature

Static cooling, 220V 50Hz,

PTC consumption incl.

EN 12900/CECOMAF

55°C

32°C

55°C

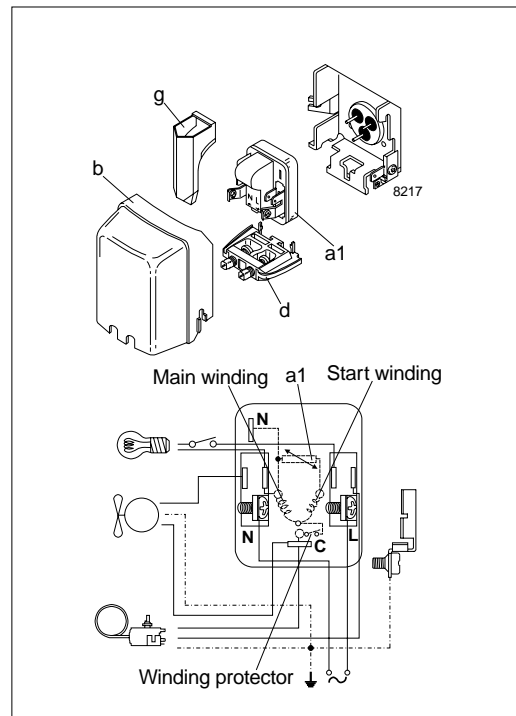
55°C

ASHRAE

55°C

32°C

32°C



### Accessories

Devices	Fig.	TL2.5F
PTC starting device 6.3 mm spades 4.8 mm spades	a1	103N0011 103N0018
Cover	b	103N2010
Cord relief	d	103N1010
Protection screen for PTC	g	103N0476
Mounting accessories		
Bolt joint for one compressor		118-1917
Bolt joint in quantities		118-1918
Snap-on in quantities		118-1919